



# ACCESS CONTROL

## VALUE PRICED MAGNETIC LOCKS EXCEL SERIES

1

ACCESS CONTROL

### DESCRIPTION

The value priced **Excel™ Architectural Series** full featured magnetic locks are easier to install and provide superior, less obtrusive appearance compared to stainless steel epoxy sealed magnetic locks. Full monitoring is standard. The quick mount assembly reduces installation time compared to epoxy sealed magnetic locks.

The value priced **Excel™ Commercial Series** full featured magnetic lock is made of an epoxy sealed satin stainless steel housing and utilizes the same mounting template as major competitive brands. Full monitoring is standard.

### FEATURES

#### E6200

- **Retrofits Securitron M62 and Locknetics 70 locks**
- **Magnetic Bond Sensor indicates door locked with full holding power**
- **Door Status indicates door open or closed**
- **Epoxy sealed electronics, tamper resistant and weatherized for indoor and outdoor use**
- **Stainless steel machine screws and blind nuts**
- **10 ft [3.05m] jacketed, stranded conductor cable**
- **Dual voltage 12/24VDC**
- **Architectural stainless steel housing, US32/630**

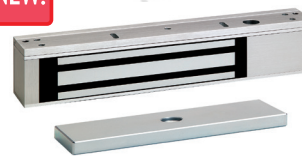
#### E1200 and E600

- **Door status, lock status and bi-color LED**
- **Interlocking quick mount assembly**
- **Adjustable mounting bracket with choice of self drilling and tapping mounting screws or machine screws**
- **Wire access chamber with terminal block**
- **Dual voltage 12/24VDC**
- **628 Clear anodized aluminum**

#### E300-SDC

- **Lock status and bi-color LED**
- **Interlocking quick mount assembly**

NEW!



E600



E300



E6200

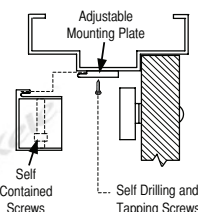


E1200

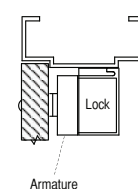
- **Adjustable mounting bracket with choice of self drilling and tapping mounting screws or machine screws**
- **Wire access chamber with terminal block**
- **Dual voltage 12/24VDC**
- **628 Clear anodized aluminum**

### MOUNTING

#### Quick Mount Interlocking Assembly



#### Outswing



### SPECIFICATIONS

|                       |                                  |
|-----------------------|----------------------------------|
| Supply Voltage        | 12/24 VDC                        |
| Supply Current        |                                  |
| E6200, E1200, E600    | 500 mA @ 12 VDC, 250 mA @ 24 VDC |
| E300-SDC              | 360 mA @ 12 VDC, 180 mA @ 24 VDC |
| Holding Force         |                                  |
| E6200, E1200          | 1200 lbs                         |
| E600                  | 600 lbs                          |
| E300-SDC              | 300 lbs                          |
| Contact Rating        |                                  |
| E6200                 |                                  |
| Lock Status Contact   | SPDT, 250 mA @ 30 VDC            |
| Door Status Contact   | SPDT, 250 mA @ 30 VDC            |
| E1200, E600, E300-SDC |                                  |
| Lock Status Contact   | SPDT, 2 A @ 30 VDC               |
| Door Status Contact   | SPDT, 250 mA @ 30 VDC            |

|            |   |
|------------|---|
| Dimensions |   |
| E6200      | 8"W x 3"H x 1.75"D<br>(20.3 x 7.35 x 4.57 cm)     |
| E1200      | 10.5"W x 2.87"H x 1.62"D<br>(26.6 x 7.3 x 4.1 cm) |
| E600       | 9.87"W x 2.87"H x 1"D<br>(25 x 5.1 x 2.6 cm)      |
| E300-SDC   | 7"W x 1.625"H x .0875"D<br>(17.8 x 4.1 x 2.2 cm)  |
| Weight     |   |
| E6200      | 12 lb (5.4 kg)                                    |
| E1200      | 11 lb (4.9 kg)                                    |
| E600       | 5 lb (2.2 kg)                                     |
| E300-SDC   | 2.5 lb (1.1 kg)                                   |
| Warranty   | 1 year  |

### ORDERING INFORMATION

| MODEL    | DESCRIPTION  |
|----------|--|
| E6200    | 1200 lb holding force magnetic lock with 10' jacketed cable for power input and status outputs |
| E1200    | 1200 lb holding force magnetic lock  |
| E600     | 600 lb holding force magnetic lock   |
| E300-SDC | 300 lb holding force magnetic lock   |

NEW!